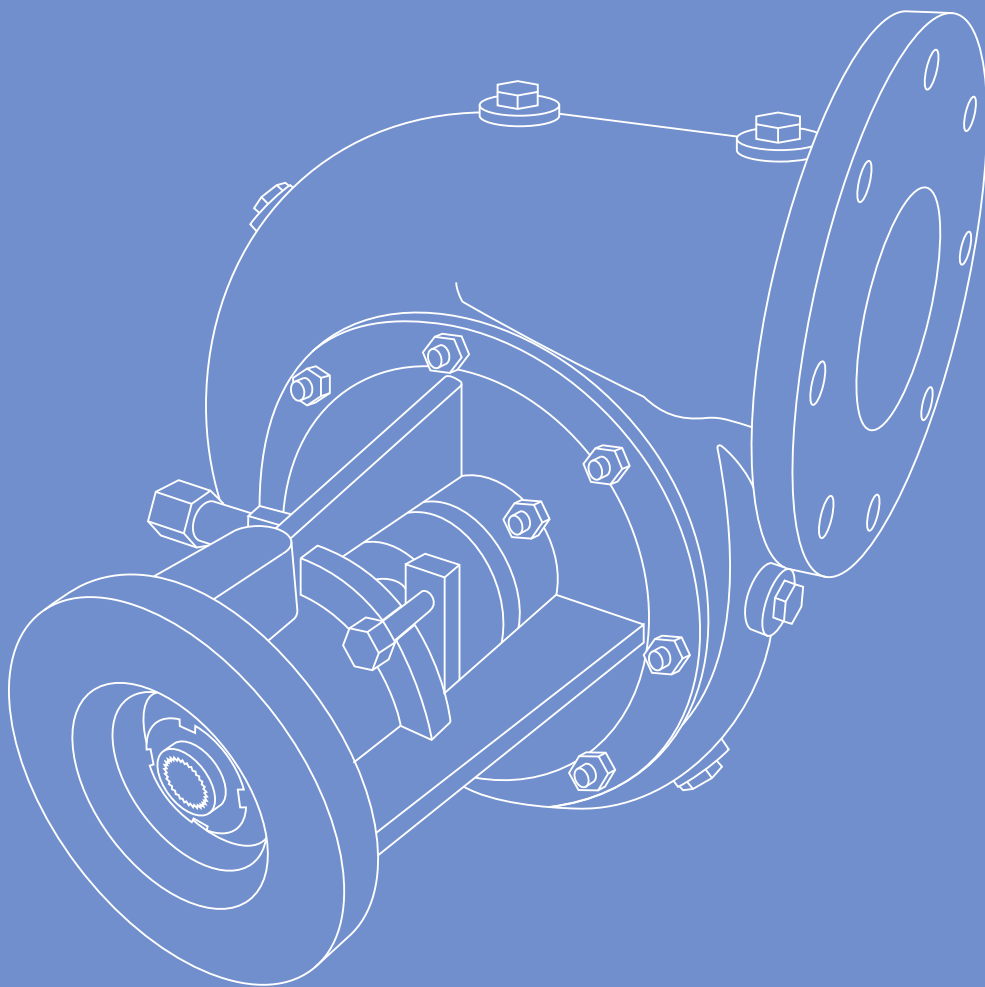


RIFLON

riflon.com



Centrifugal pump

NC-350R1

NC-350R1 SERIES CENTRIFUGAL PUMP

Centrifugal pumps of **NC-350R1** series is intended to pump various liquids:

- abrasive hydraulic fluids (clay and gravel mortars, mixtures of water and sand, ore, etc.);
- flushing liquid used in the course of well drilling;
- household and industrial waste waters;
- spent flushing liquid (into cyclone plant to clean it of drilled solids;
- cement mortars.

Advantages of centrifugal pump NC-350R1:

- simple maintenance;
- light weight;
- compact size;
- extreme durability;
- minimal installation space requirements;
- all parts are steel casted;
- stainless steel impeller;
- increased wearing resistance of pump components;
- horizontal or vertical layout;
- versatile, modular design that allows customers to purchase only the parts necessary for repairs;
- ability to alter rotation direction, which is possible because it is simple to install an impeller suitable for the necessary rotation and volute direction (only the impeller is to be replaced, while all other parts remain the same);
- exposed impeller.

Pumped fluid properties:

hydraulic fluid density, kg/m³

temperature, °C

solid particle content

solid particle maximal size, mm

up to 2500

+5 ... +55

up to 60%

at most 20

Technical specifications:

Pump overall dimensions (LxWxH), mm

Inlet port diameter, mm

Outlet port diameter, mm

Impeller diameter, mm

Maximal speed, rpm

Weight, kg, ±3%

Maximal head, m

Maximal flow, m³/h (lps)

Component materials:

Impeller

Other components (castings)

Other components (except castings)

1230x1290x1050

400 (16") ASME/ANSI B 16.5 Class 150

350 (14") ASME/ANSI B 16.5 Class 150

585 (23")

1500

1000

90

3000 (833)

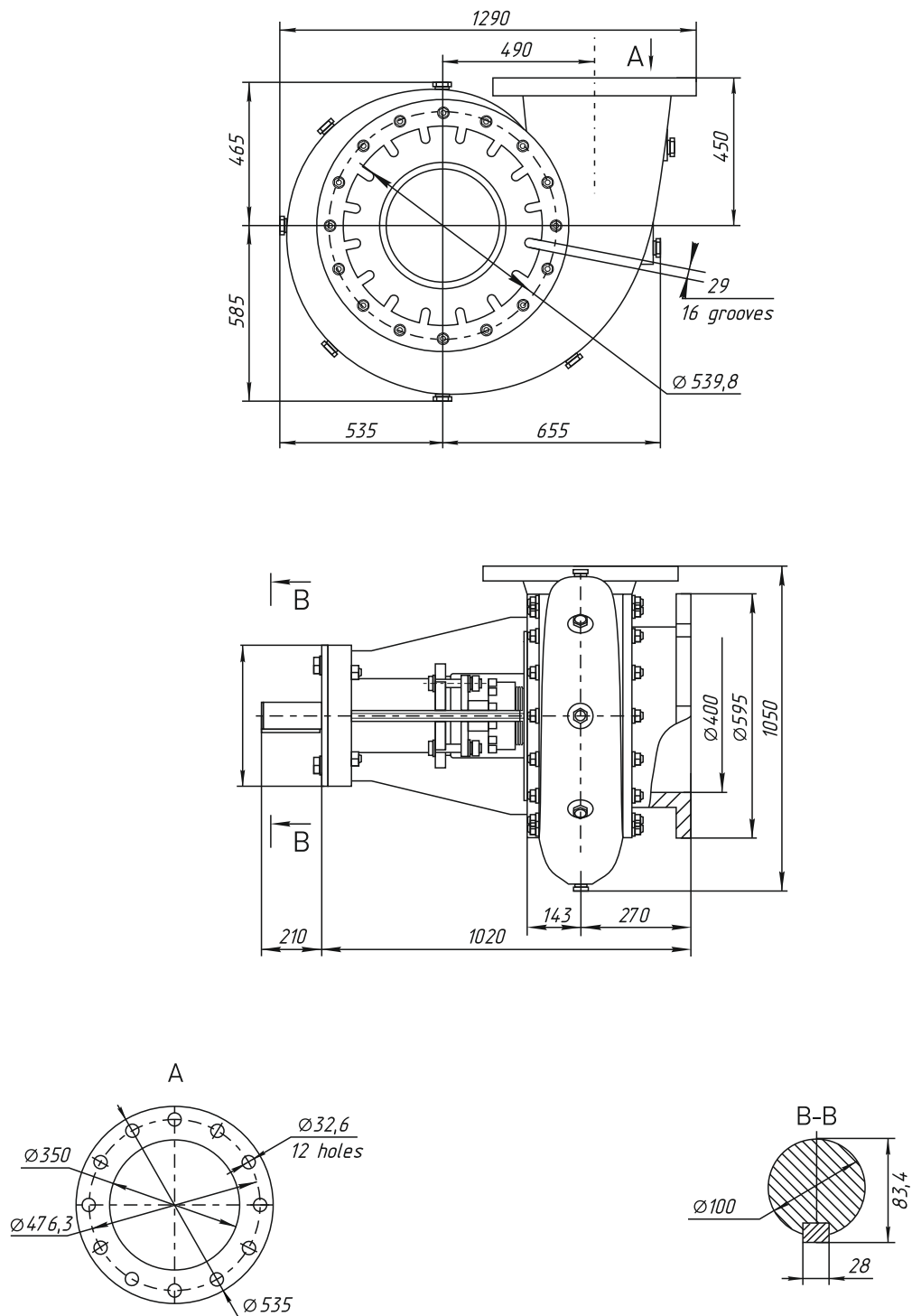
20H13L

40HL

40H

Centrifugal pump NC-350R1 (16" x 14" x 23"). Dimensions.

Picture 1

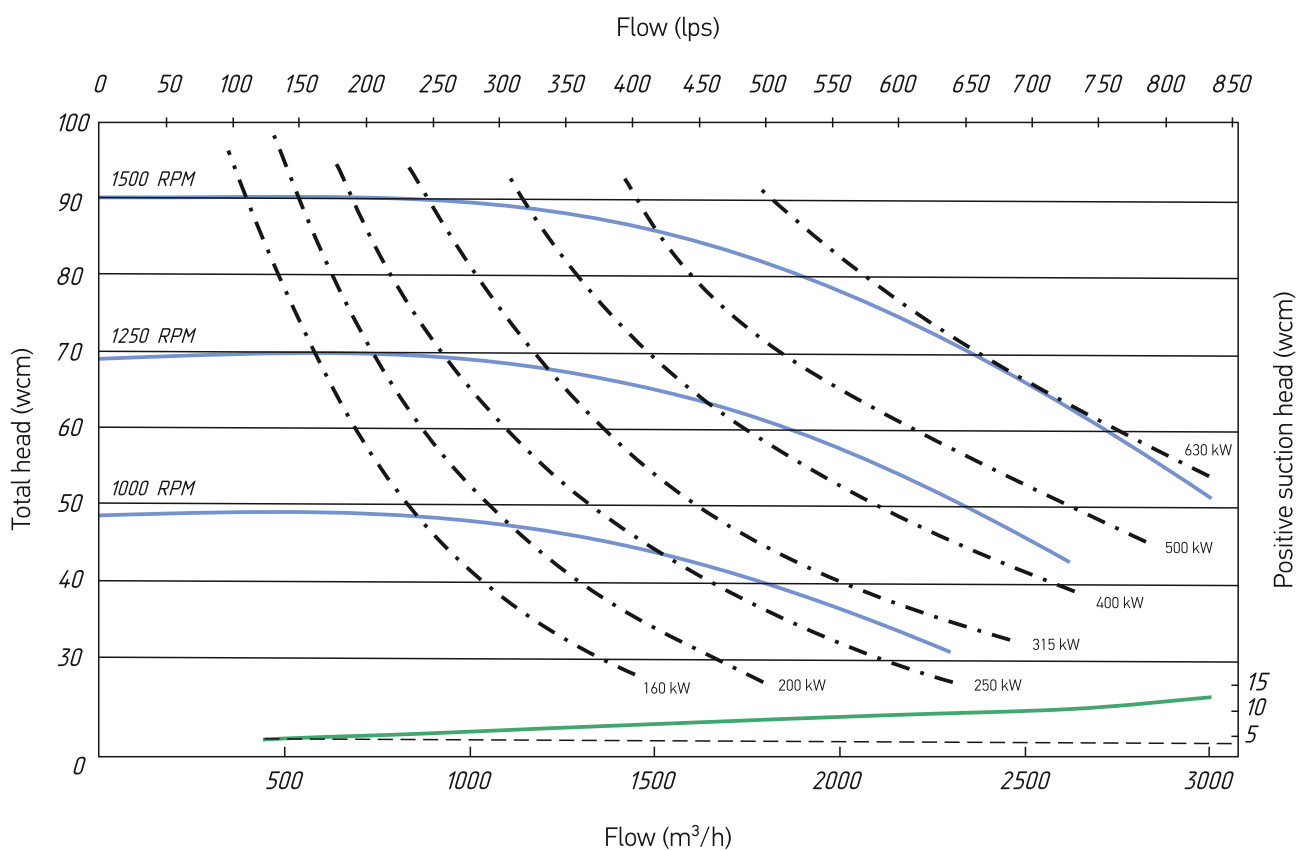


Pump modifications

Typesize	Pic.	Connection	Rotation
NC-350R1	1	Coupling	C.W.
NC-350R1-01	2	Coupling	C.C.W.

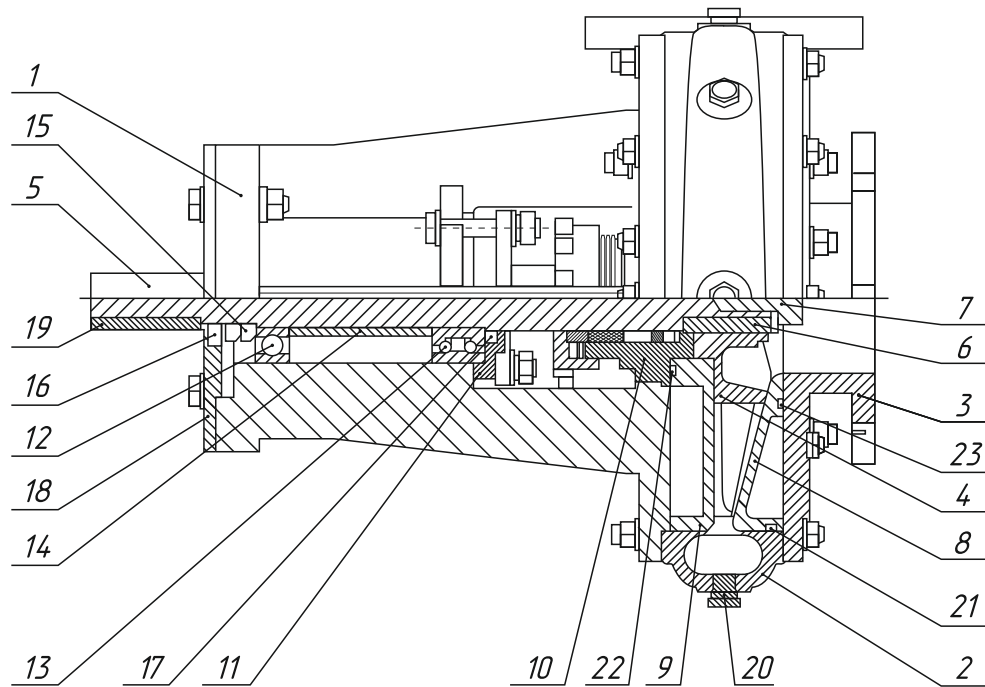
Additional parameters

Name	The option of the performance
Shaft seal type	Gland seal
	Mechanical seal



Pump card

Centrifugal pump NC-350R1 manufactured by RIFLON is a small and compact device intended for high pressure feeding of three-cylinder piston pumps involved in wells operation. It is specially designed to pump abrasive mixtures (sludge) and cement mortars. The pumps are manufactured by means of contemporary CNC equipment. Our centrifugal pumps are suitable for various industries.

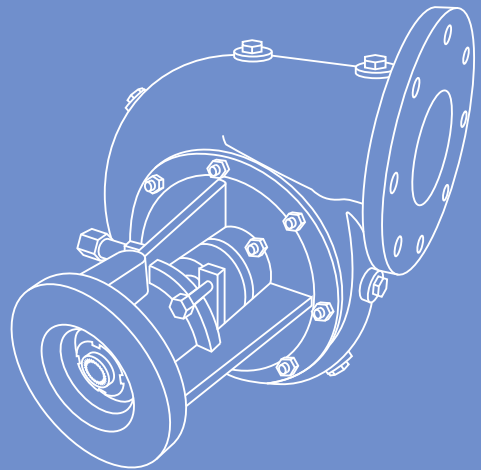


Centrifugal pump NC-350R1 (16"x14"x23"). Structure.

1	body
2	volute diffuser with outlet fitting 14"
3	inlet fitting 16"
4	full opening impeller 23"
5	spindle
6	impeller keysteel
7	bolt for locking the impeller to the spindle
8, 9	front and rear wear-related shrouds
10	packing assembly
11	cap
12, 13	bearings
14	spacing sleeve
15	clamping nut
16, 17	boot
18	protective washer
19	coupling key
20	slug K3/8" GOST 6111-52
21, 22, 23	o-rings GOST 9833-73

RIFLON

riflon.com



phone:
+1 (512) 861-19-64

e-mail: sales@riflon.com
www.riflon.com